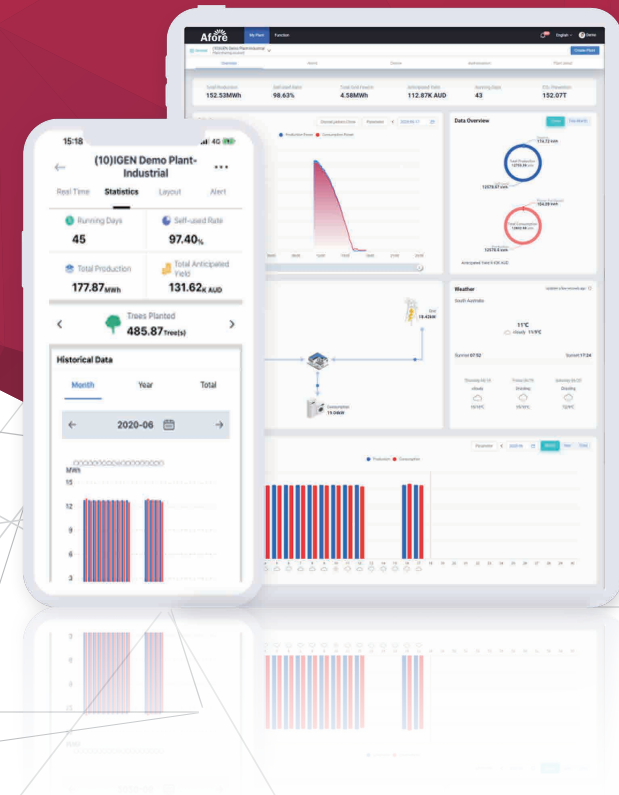


App User Manual

Afore Business APP

www.aforeenergy.com



Afore New Energy Technology (Shanghai) Co., Ltd.

T 86-21-54326236 F +86-21-54326136 E info@aforeenergy.com

Ad Building 7, No.333 Wanfang Rd, Minhang District, Shanghai, China. 201112



Afore New Energy Technology (Shanghai) Co., Ltd.

Contents

1. Download AFORE Business APP 1

2. Register a Business 1

3. Create a New Plant 2

 3.1 Add a Gateway/Logger 5

4. Plant Created. 9

1. Download AFORE Business APP

Scan QR code below to download (Both for Android&iOS) .



2. Register a Business

After download AFORE Business APP , click register to create a business

下午4:47 5G

English

AFORE Business

E-mail

Phone

Username

E-mail

Password(6-50 characters)

Register

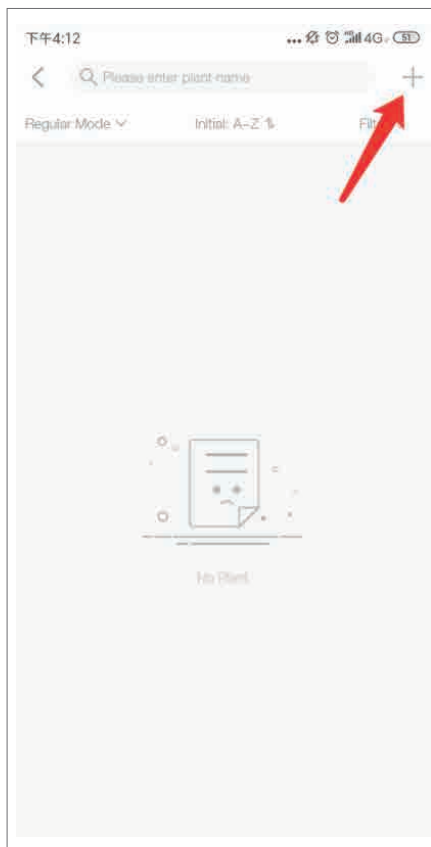
Forgot Password?

Log In

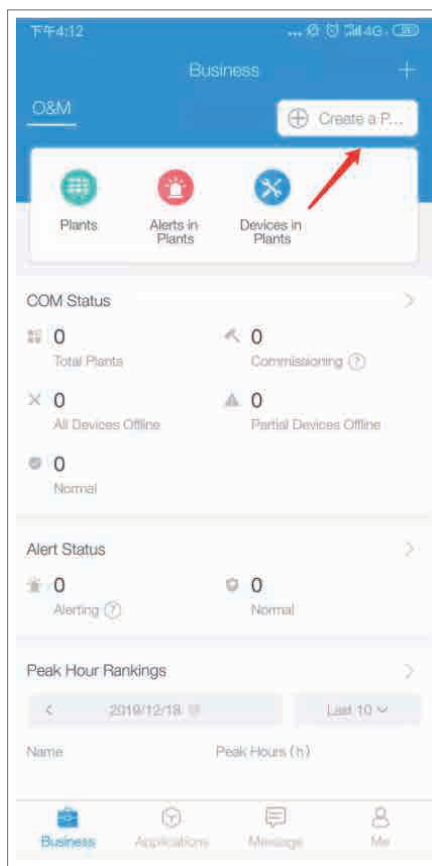
Current Version V1.4.2

3. Create a New Plant

1. Log in to AFORE Business. (Super admin has full permissions. If other account wish to create a plant, please check its permission first.)
2. Method 1: Go to **【Business】** — **【O&M】** — **【Plant】** and click **【+】** in the upper right corner.



3. Method 2: Go to **【Business】** and click **【+ Create a Plant】** in the upper right corner.



4. Users can enter basic info, system info, yield info, owner info here. Plant name, location, region, address, coordinate, capacity, currency are required fields.

下午4:13

... 4G

Cancel

Create a Plant

Save

Basic Info

* Name

Please enter

* Location

Longitude 120°21'40"/Latitude 31°3... >

* Region

Chin.../Jian.../Wuxi/Xinw... >

* Address

Please enter

* Time Zone

(UTC+08:00) Beijing,Chongqing,Ho... >

Creation Date

2019/12/18

System Info

* Plant Type

Residential Rooftop >

* System Type

All on Grid >

* Installed Capacity(kWp)

Please enter

Azimuth(°)

Please enter(0-300)

Angle of Tilt(°)

Please enter(0-90)

* Commissioning Date

2019/12/18 >

Yield Info

* Currency

CNY >

Unit Price(CNY/kWh)

Please enter

Total Cost(CNY)

Please enter

Owner Info

Name

Please enter

Contact Number

Please enter

Working Company

Please enter

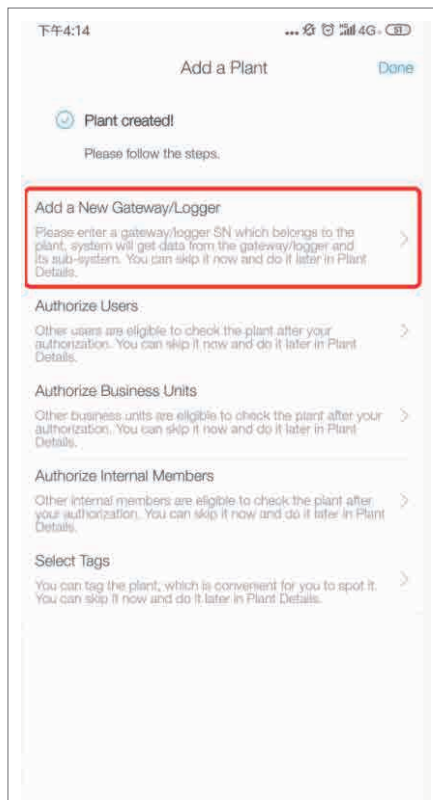
**Note:**

1. After the plant location is confirmed, system will confirm the region, coordinate, currency and time zone automatically.
2. System type includes All on Grid, Self-consumption, Energy Storage System. Different system type has different plant view. Please select the system type according to actual situation.
3. Capacity is a required field. Please enter the accurate capacity.

3.1 Add a Gateway/Logger

Please enter gateway/logger SN belongs to the plant. System will count data according to gateway/logger and its sub-device.

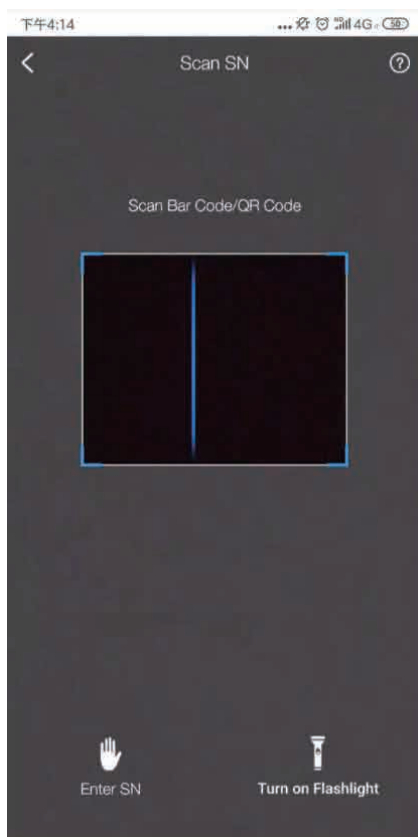
1. After entering the plant info, click save. Then go to **【Add a New Gateway/Logger】**



2. Go to **【New Gateway/Logger List】** and click **【+】** in the upper-right corner.



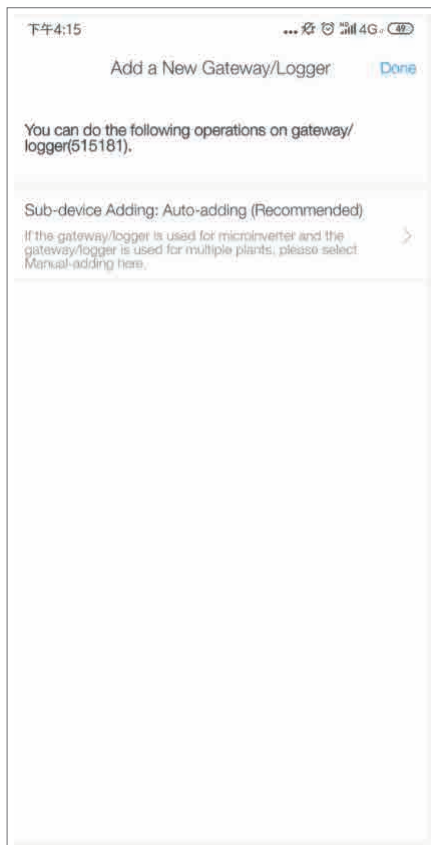
3. Scan bar code/QR code of gateway/logger here.



Note:

- If you cannot find gateway/logger SN, please click **【?】** in the upper-right corner.
- If there is no bar code/QR code or the bar code/QR code is borken, please go to **【Enter SN】** in the lower-left corner.
- If it is in low-light conditions, please click **【Turn on Flashlight】** .

4. After scanning the gateway/logger SN, click **【Done】** to finish.



4. Plant Created

After adding a gateway/logger and authorizing a plant, back to the page below. Click **Done** in the upper-right corner. System will go to Plant Details automatically. If the gateway and its sub-device are networked, users can check the data around 10 mins.

