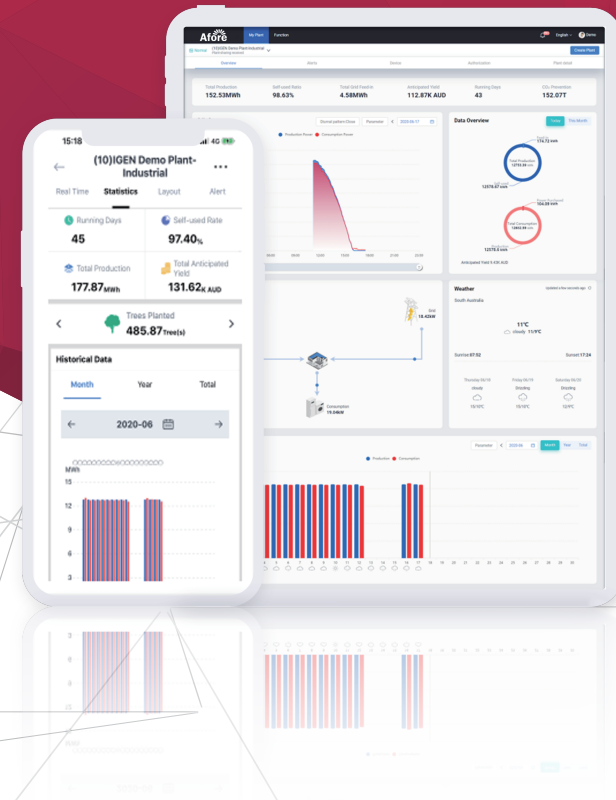


App User Manual

Afore Smart HOME APP

www.aforeenergy.com



Version:03.610100004001/V0.01



Afore New Energy Technology (Shanghai) Co., Ltd.

T 86-21-54326236 F +86-21-54326136 E info@aforeenergy.com

Ad Building 7, No.333 Wanfang Rd, Minhang District, Shanghai, China. 201112



Afore New Energy Technology (Shanghai) Co., Ltd.

Contents

1. Account.	1
1.1 Login&Registration	1
1.1.1 Registration.	1
1.1.2 Login.	1
1.2 Account Blinding	2
1.3 Password	3
1.3.1 Forgot Password?.	3
1.3.2 Password Modification.	4
1.4 Account Cancellation	4
2. Plant Monitor.	7
2.1 Create a plant	7
2.2 Add a Logger	10
2.3 Networking Configuration	14
2.4 Data View	16
2.4.1 Real-time Data.	16
2.4.2 Statistics Data.	17
2.4.3 Plant Alert	18
2.4.4 Plant Details.	18
2.4.5 Device Info.	19
2.5 Plant Authorization	19
2.5.1 Plant created by myself.	20
2.5.2 Plant authorized by others.	20
2.6 Plant Settings	21
2.6.1 Delete Plant.	21
2.6.2 Plant Settings.	21
3. Message.	23
3.1 Messaging	23
3.2 Message Settings	24
3.2.1 Receive Alert Message.	25
3.2.2 Alert Range Settings	26
3.2.3 Alert Frequency Settings.	26
3.3 Service Plan	27
4. Others.	28
4.1 Languages	28
4.2 Common Operations	29
4.2.1 Log Out.	29
4.2.2 Personal Info.	29
4.2.3 General.	30
4.2.4 Online Service.	31

1. Account

1.1 Login&Registration

1.1.1 Registration

After entering 'Afore Smart HOME APP', please register at Afore Smart HOME App to ensure the normal function.

Click "**Register**" to continue.

System supports E-mail or phone registration currently. Please follow:

(1) Set login account. (Phone number and E-mail are supported.)

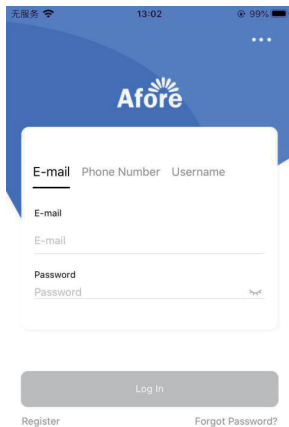
(2) Set password. (Password length: 6-50 bits)

The image displays two side-by-side screenshots of the 'Register' screen in the Afore Smart HOME APP. Both screens have a blue header with a back arrow and the title 'Register'. Below the header, there are two tabs: 'E-mail' and 'Phone Number'. The left screen shows the 'E-mail' tab selected, with fields for 'E-mail', 'Verification Code', and 'Password'. The right screen shows the 'Phone Number' tab selected, with fields for 'Phone Number', 'Verification Code', and 'Password'. Both screens have a 'Send' button next to the 'Verification Code' field and a 'Done' button at the bottom. At the very bottom of each screen, there is a checkbox and the text 'I have read and agreed to T&Cs and Privacy Policy'.

1.1.2 Login

If you have an account at Afore Smart HOME Platform, you can login directly.

Quick and easy access via WeChat or QQ is also supported.



The image shows the login screen of the Afore mobile app. At the top, there's a status bar with '无服务' (No Service), signal strength, time '13:02', and battery '99%'. Below the status bar is the Afore logo. The main content area has three tabs: 'E-mail', 'Phone Number', and 'Username'. The 'E-mail' tab is selected. Below the tabs are two input fields: 'E-mail' and 'Password'. Below the input fields is a 'Log In' button. At the bottom, there are two links: 'Register' and 'Forgot Password?'.

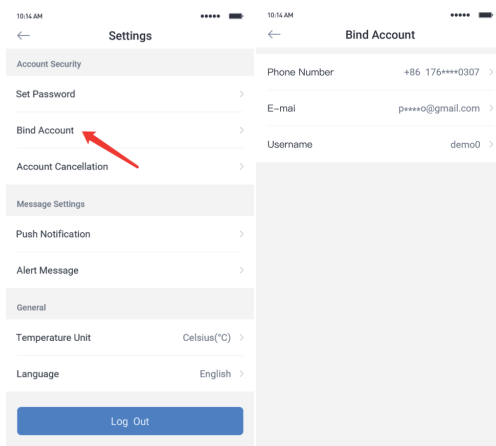
1.2 Account Binding

Go to 「**Me**」 - 「**Settings**」 - 「**Account Binding**」 to bind your account with your main contact way.

- You can log in via your main contact way after the binding is done.
- Some functions (e.g. send alerts to E-mail) are available for you after the binding is done.

Binding Methods:

- (1) Phone Number (China, America, Brazil and Netherlands);
- (2) E-mail;
- (3) Username;
- (4) WeChat;
- (5) QQ.



1.3 Password

1.3.1 Forgot Password?

If your password is forgotten, please click "**Forgot Password**" to find your password back.

(1) If you try to find your password via your phone, please enter your phone number first, then click "**Send**". System will send a verification code message to your phone. Please enter the right verification code and reset your password.

(2) If you try to find your password via E-mail, please enter your E-mail address first, then click "**Send**". System will send a verification code E-mail to your mailbox. Please enter the right verification code and reset your password.

**Note:**

If you encounter the following problems, please contact Customer Service.

- Your phone or E-mail has been deactivated.
- Login method is "Username". And your account has not bound your phone or E-mail.

10:25 4G

Find Password

via E-mail via Phone

E-mail

E-mail

Verification Code

Verification Code Send

Password

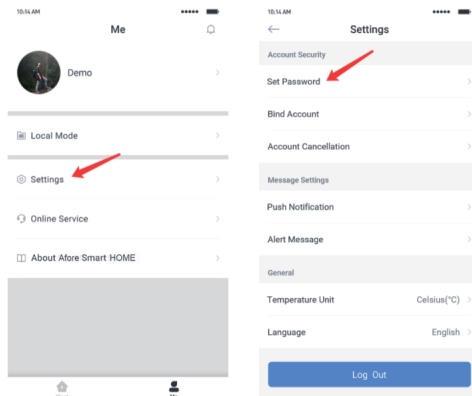
Password

Password at least 6 bits

Done

1.3.2 Password Modification

Go to 「Me」 - 「Settings」 - 「Modify password」 to change your password.



1.4 Account Cancellation

Step 1

Go to 「Account Cancellation」 Page

「Me」 - 「Settings」 - 「Account Cancellation」

Step 2

Read Cancellation Notice

Please read the following instructions carefully before you apply for cancellation of your account.

- (1) Please back up your data (e.g. Production Data, Grid-tied Data, SN and etc,) in advance to avoid unnecessary losses.
- (2) Your plant data (e.g. Production Data, Grid-tied Data, SN and etc,) will be erased permanently after your account is cancelled, which is unable to recover.
- (3) Your personal data will be erased permanently after your account is cancelled, which is unable to recover.
- (4) The connections between the account and business units will be erased permanently after your account is cancelled, which is unable to recover. And the business unit will not be able to use this software.

(5) All data will be erased permanently after your account is cancelled, which is unable to recover.

(6) You can create a new account after this account is cancelled.

10:14 AM *****

← Account Cancellation

Please read the following instructions carefully before you apply for cancellation of your account.

1. Please back up your data (e.g. Production Data, Grid-tied Data, SN and etc.) in advance to avoid unnecessary losses.
2. Your plant data (e.g. Production Data, Grid-tied Data, SN and etc.) will be erased permanently after your account is cancelled, which is unable to recover.
3. Your personal data will be erased permanently after your account is cancelled, which is unable to recover.
4. The connections between the account and business units will be erased permanently after your account is cancelled, which is unable to recover. And the business unit will not be able to use this software.
5. All data will be erased permanently after your account is cancelled, which is unable to recover.
6. You can create a new account after this account is cancelled.

Click "Next" to cancel the account.

Next

Step 3

Select Reason of Cancellation

10:14 AM *****

← Account Cancellation

Please select your reason of cancellation here.

- ☐ Phone Number/E-mail to unbound
- ☐ Wechat/QQ to unbound
- ☐ Create a new account later
- ☐ The account is not created by myself
- ☐ No need to use SolarMAN software
- ☒ No longer use SolarMAN software
- ☐ Others

Next



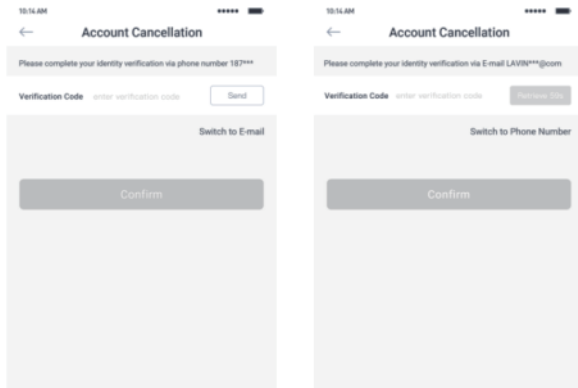
Note:

Account that has data on Afore Business can't be cancelled from Afore Smart HOME.

Step 4**Phone Number/E-mail Verification**

If your account has bound to phone number or E-mail, phone number/E-mail verification will be required.

You can select either method for verification.



After entering the verification code, click “**Confirm**”.

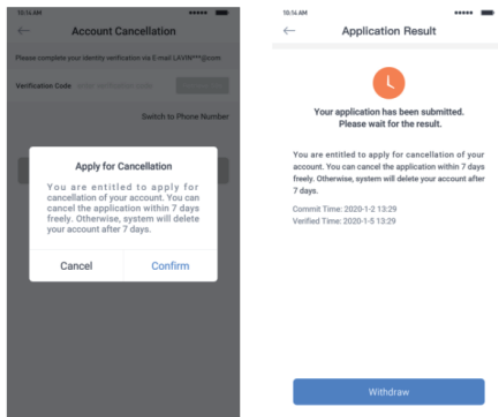
**Note:**

If your account has not bound to phone number or E-mail, please skip this step.

Step 5**Final Confirmation**

Please read the content in popup carefully and make your final confirmation here.

Application review period is 7 days. You can cancel the application within 7 days freely. Otherwise, system will delete your account after 7 days and all data will be erased together.



2. Plant Monitor

2.1 Plant Monitor

You can create your own plant at “Afore Smart HOME” to run a real-time monitoring. System will collect and calculate data from associated devices, which enables a full understanding of PV plant running status.

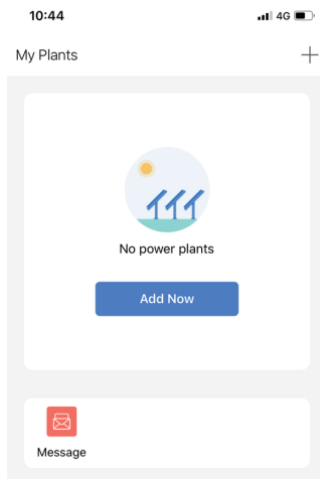
Step 1

Add Now

Click **"Add Now"** to create your plant on Afore Smart HOME.

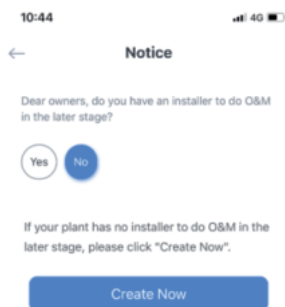
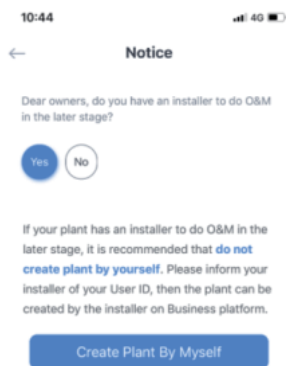
Notice: If you have already created a plant, you will not see the following page.

And if you wish to create another plant, please click **"+"** in the upper-right corner and select **"Create a Plant"**.



When you enter the following page, please select according to your own situation.

If your plant has an installer to do O&M in the later stage, it is recommended that do Not create plant by yourself.



Step 2

Enter Plant Details

Please enter detailed plant information according to your actual situation. System will create an unique plant for you. In order to calculate plant data precisely, please enter

- (1) Plant Name,
- (2) Plant Type,
- (3) Grid Type,
- (4) Plant Location,
- (5) Installed Capacity,
- (6) Time Zone,
- (7) Other information.



10:32
4G

←

Plant Details

Basic Info

Plant Name

Home your plant

Time Zone

Beijing,Chongqing,Hong Kong,Guang

System Info

Plant Type

Residential Rooftop

System Type

All on Grid

Installed Capacity(KWp)

Please enter

Operating Date

2020-06-19

Yield Info

Currency

CNY

Unit Price(CNY/kWh)

Please enter (Optional)

Total Cost(CNY)

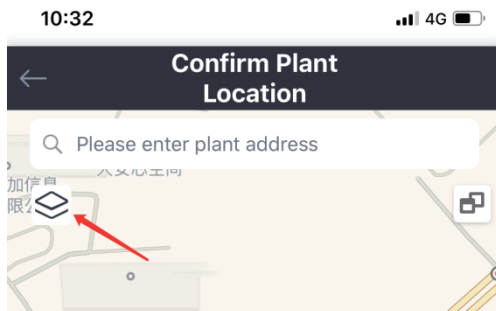
Please enter (Optional)

Done



Note:

You can click the left icon to switch between Google Maps and Amap.



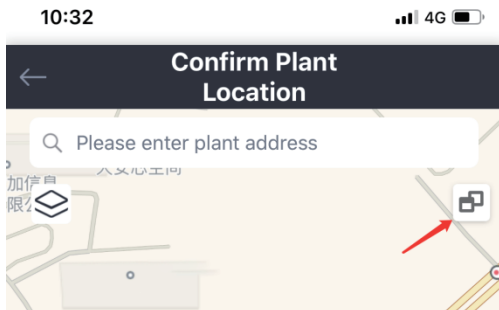
- Amap will enhance searching&locating ability in China.
 - Google Maps will enhance searching&locating ability globally.
- Please select according to your own situation.



Note:

Due to laws and regulations in China, Google Maps is not available in China mainland.

You can click the right icon to switch between 2D Plan and Satellite Map.



Click "Done" to complete the creation.

If there is no data in your plant, which means you have not added a device in

2.2 Add a Logger

After the plant is created, you can add a logger. Logger can collect running data from PV devices and upload to server, which enables a full understanding of PV plant running status and revenue information. Furthermore, Afore Smart HOME will determine whether the plant is running normally, which avoid property losses caused by device failure and other reasons.

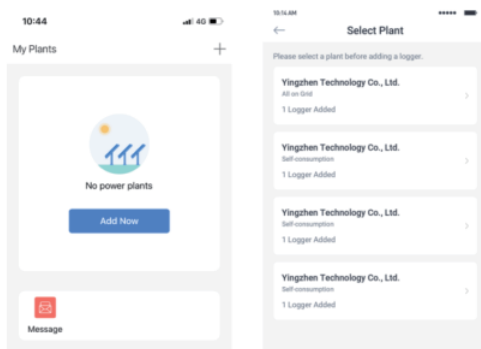
Step 1

Select a Plant

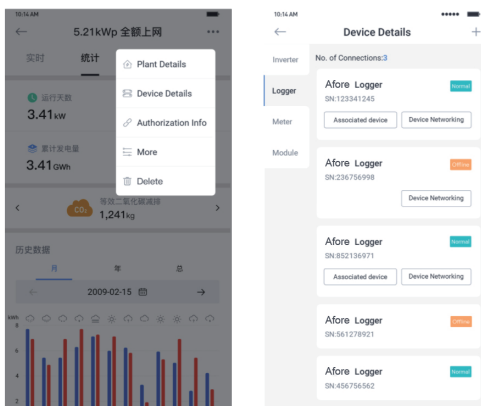
In case you have various power plants, which might cause data corruption, it is recommended to select a plant first before adding a logger.

Ways to add a logger:

(1) Go to "Plant Homepage", click "+" in the upper-right corner, select "Add a Logger", then 「Select a Plant」 according to your actual situation.



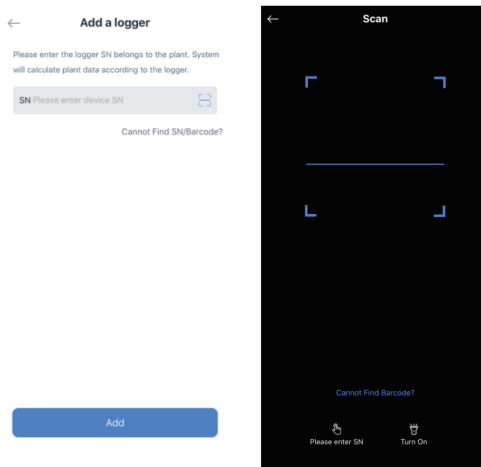
(2) Go to 「Plant Details」, click "..." in the upper-right corner, and go to 「Device Details」, then click "+" in the upper-right corner to add a logger to the target plant.



Step 2

Enter Logger SN

Users can enter logger SN manually or click icon in the right to scan SN.
SN can be found on the product box. If the product box has been lost, you can find SN on WIFI Module body.



Step 3

Select Authorization Mode

When you add a logger, it is required to select authorization mode. System will add a device to your plant according to your authorization mode.

(1) Select authorized device automatically

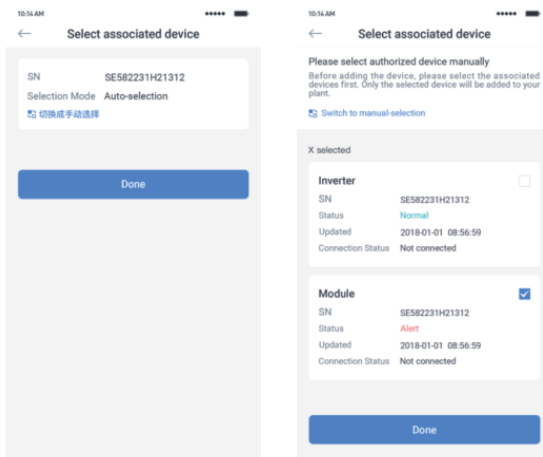
Default authorization mode: Select authorized device automatically. If you select this mode, devices connected to logger will be added to the plant automatically.

(2) Select authorized device manually

If you select authorized device manually, it is required to select the device connected to logger first, then add the target devices to the plant. If the logger does not have normal networking or devices have no connection with the logger at this period, you can go to 「**Device Details**」 and add device manually when it runs normally.

**Note:**

Once the device has been added to the plant, authorization mode cannot be changed. If you want to change the authorization mode, please delete the logger first and add to the plant again.

**Step 4**

After finish adding, you can check logger data on "Device Details" page.

If the logger is equipped with a WiFi module, please know the following information:

- (1) Wi-Fi module is not capable of communication, which cannot transmit data directly.
- (2) If you wish your logger is capable of communication, it is required to operate networking configuration first. System will keep you informed after adding a device, then click **"Go to Configure"**.
- (3) After networking configuration is done, it means the logger is capable of communication, which can transmit data to server. Then you can check plant data on Afore Smart HOME.
- (4) Due to network and server connection reasons, please wait about 5-10 mins to check the data after the configuration is done.
- (5) If the data cannot be displayed normally, please check router network or try networking configuration again.

2.3 Networking Configuration

If the logger is equipped with a WiFi module, it is required to operate networking configuration to ensure normal communication.

Go to 「**Device List**」 and check if there is "Networking Configuration" button. If not, it means networking configuration is not required.

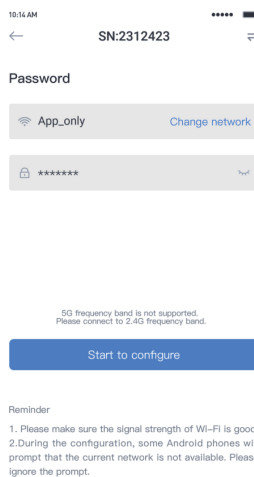
Networking Process

Please use 2.4G network for configuration. 5G network is not supported.

Step 1

Confirm Wi-Fi Info

Please make sure your phone has connected to the right WiFi network and click "Start".

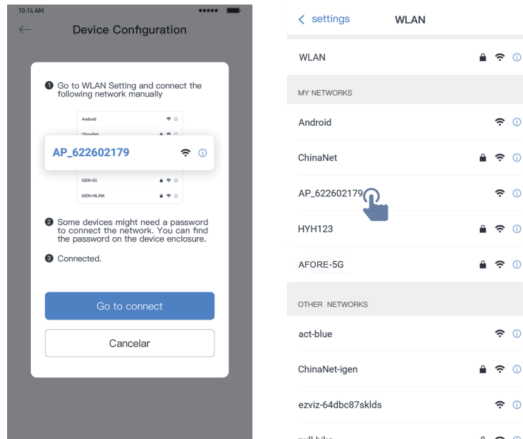


Step 2

Connect to AP network

Go to Phone Settings-WLAN, find the right "AP_XXXXX" network and click "Go to connect".

Go back to Afore Smart HOME after your phone has connected to AP network.

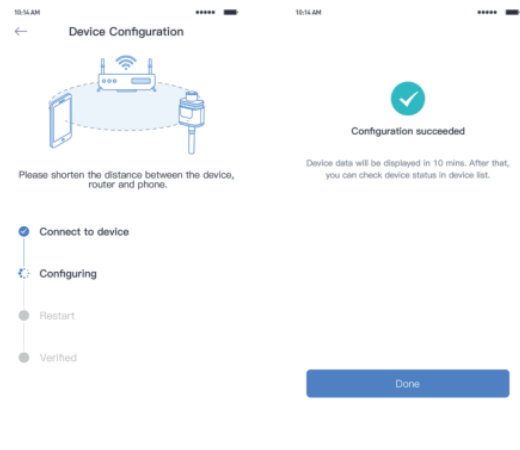


Step 3

Auto Configuration

Please wait for a while to complete the configuration. System will switch to the Configured Page automatically.

When you go back to 「**Device List**」, the logger will still at Offline status. Usually, the data will be updated in 10 mins. Please wait patiently.



If configuration failure occurs, please check the following reasons and try it again.

- (1) Make sure WLAN is ON;
- (2) Make sure WiFi is normal;
- (3) Make sure wireless router does not implement the white-black list;
- (4) Shorten the distance between the phone and device;
- (5) Try to connect to other Wi-Fi;
- (6) Remove the special characters in Wi-Fi network.

2.4 Data View

After plant settings and device settings are done, users can check data at this moment.



Note:

The data will be updated in 5-10 mins after the configuration is done.

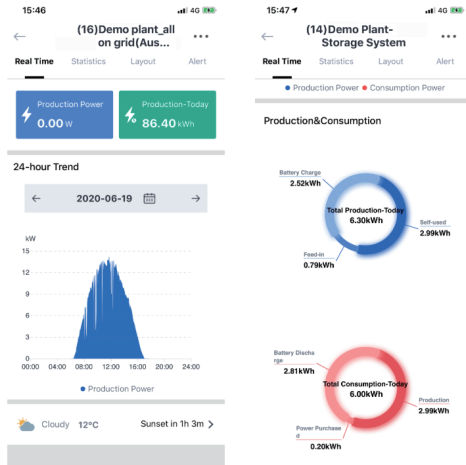
2.4.1 Real-time Data

Users can check various data on this page. E.g. Real-time Production Power, Flow Chart, 24H Curve, Production, Consumption and etc.,.

Notice: System will display different page layout according to your plant system type. Please set plant system type according to your actual situation.

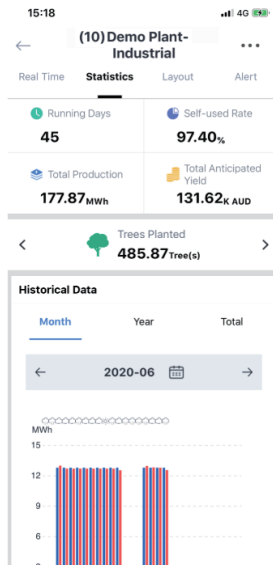
Our recommendations:

- If your device (e.g. inverter) only acquires production data and transmits data to grid, it is recommended that you choose **"All on Grid"** as your plant system type;
- If your device (e.g. inverter) acquires production data and consumption data at the same time, it is recommended that you choose **"Self-consumption"** as your plant system type;
- If your device (e.g. inverter) acquires production data, consumption data, battery data and grid data at the same time, it is recommended that you choose **"Storage System"** as your plant system type.



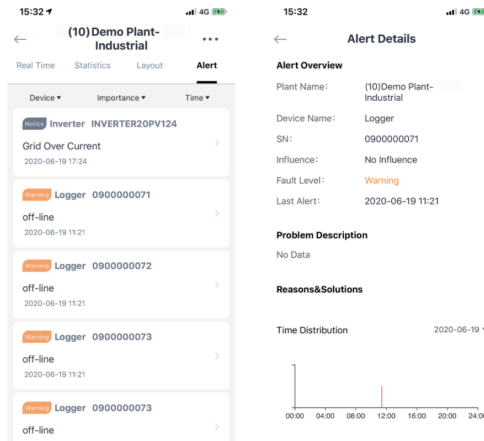
2.4.2 Statistics Data

Users can check plant statistics data and historical data on this page and filter specific date and conditions to query.



2.4.3 Plant Alert

Users can check plant alert on this page. Alert will be distinguished from alert grade and alert content, which enables you to understand the importance of alerts. Through these alert message, users can learn the fault status of your plant, which avoids property losses.



2.4.4 Plant Details

Click "..." in the upper-right corner to go to 「Plant Details」 page. Users can check Basic Info, System Info, Revenue Info and etc,. Moreover, you can modify the information here to ensure a better analysis of plant data.

13:35


4G

←

Plant Details

Basic Info

Plant Cover



Plant Name

Demo plant-Micro inverter

Plant Loc

nantong rugao

Time Zone

(UTC+08:00)
Beijing,Chongqing,Hong Kong,Urumqi

Creation Date

2019-09-02

Founder

张大陆

System Info

Plant Type

Residential Rooftop

System Type

All on Grid

Installed Capacity(kWp)

6000

Azimuth(°)

0~180

Angle of tilt (°)

0~90

Operating Date

2019-09-02

Yield Info

Currency

CNY

Unit Price(CNY/kWh)

1

Total cost(CNY)

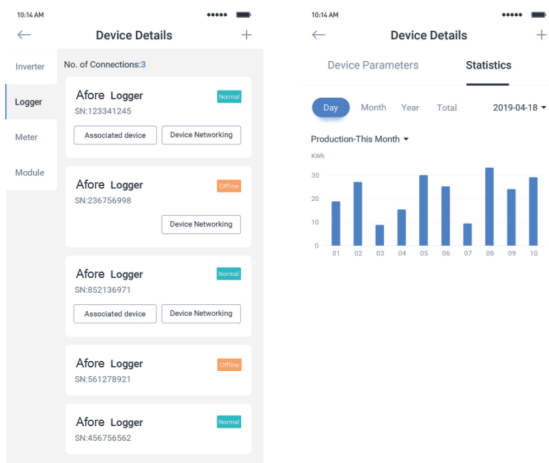
Please enter (Optional)

2.4.5 Device Info

Click "..." in the upper-right corner to go to 「**Device Info**」 page. Users can check device information on this page. Click a specific device to check specific info, including device real-time parameters, statistical chart and etc,. Moreover, users can check if the device is running normally. Click "More" in the upper-right corner on 「**Device Details**」 page to edit or unbind a device.

If the device is a logger, "Networking Configuration" can be operated here.

If the device is a meter, "Meter Configuration" can be operated here.



2.5 Plant Authorization

Click "..." in the upper-right corner on 「**Plant Details**」 page to go to 「**Authorization Info**」 page.

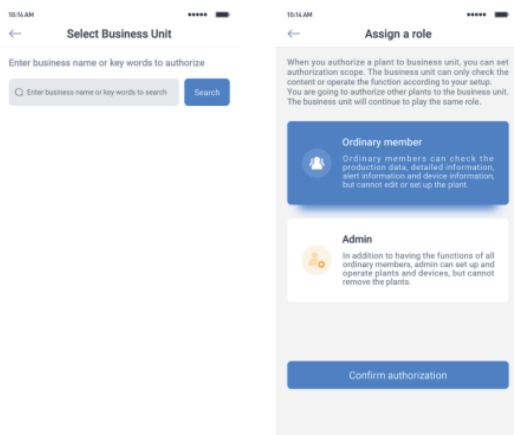
According to plant property, there are two types of plant. One is created by myself. Another is authorized by others.

2.5.1 Plant created by myself

Please refer to authorization steps. Users can authorize the plant to your service provider. After that, the authorized service provider can check your plant data and operate your device.

The authorization scope is determined by the role you set for the service provider.

- If the service provider is "Ordinary Member", then it can check all plant data.
- If the service provider is "Admin", then it can check all plant data and operate the plant/device.

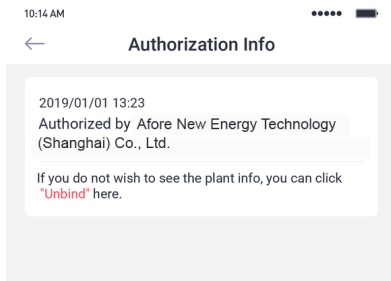


2.5.2 Plant authorized by others

Currently, the service provider can authorize the plant to users. Users can check data of authorized plants within the permissions.

Users cannot authorize such plants to others.

If users do not wish to follow the plant, click "Unbind".



2.6 Plant Settings

2.6.1 Delete Plant

Click “...” in the upper-right corner on 「**Plant Details**」 page to delete a plant. System will display a popup dialog twice for confirmation. After your confirmation, the plant will be deleted from your account. The deletion is not recoverable and all the data will be deleted. Please be cautious!

Notice: Authorized plant cannot be deleted.

2.6.2 Plant Settings

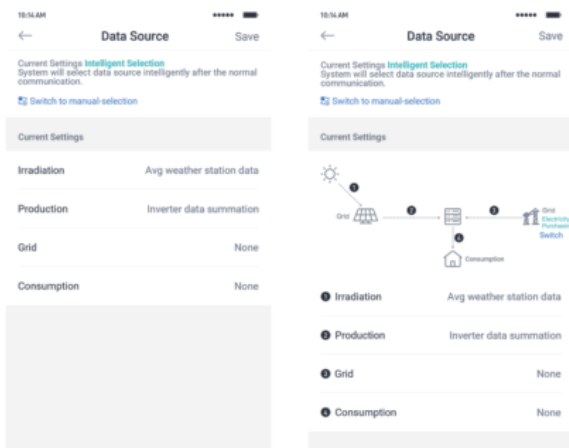
Click “...” in the upper-right corner on 「**Plant Details**」 page to go to 「**More Settings**」. Users can set plant properties and rules here.

- Data Source
- Calculation of Accumulated Production
- Zero Setting for Production Power

Data Source

Users can set the data source for production, grid, consumption and battery to ensure data accuracy.

Default: Intelligent Selection. System will select data source based on plant actual situation. Or you can modify it manually.



Calculation of Accumulated Production

Users can set rules of taking figures for production, consumption, grid feed-in, electricity purchasing, energy charged, energy discharged.

Default: via accumulated production uploaded by devices.

Users can select via daily production summation manually and system will no longer use device data as the benchmark, platform calculation instead.

Platform Calculation = Daily production summation within the selected time period

E.g.:

Accumulated Production in 30 days= Production on 1st June + Production on 2nd June + + Production on 30th June

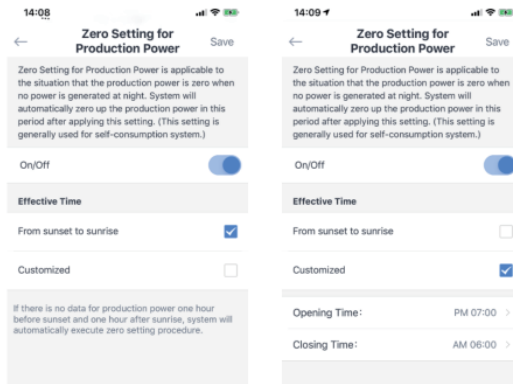
Zero Setting for Production Power

Zero Setting for Production Power is applicable to the situation that the production power is zero when no power is generated at night. System will automatically zero up the production power in this period after applying this setting. (This setting is generally used for self-consumption system.)

Meet all three preconditions of zero setting below

- (1) Current time is within Effective Time.
- (2) Inverters or other generating devices do not upload production data.
- (3) Data source on Generation-side is not "None".

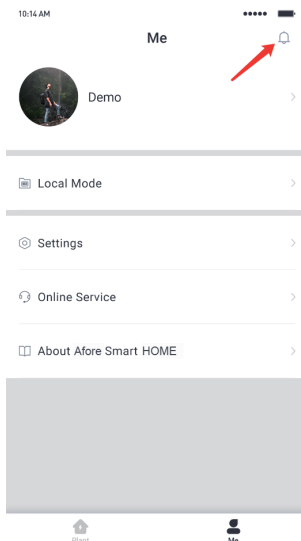
Due to local sunrise and sunset time change seasonally, the period of no power generated at night changes synchronously. It is recommended that set Effective Time as From Sunset to Sunrise, which means system will set effective time according to actual sunset and sunrise time.



3. Message

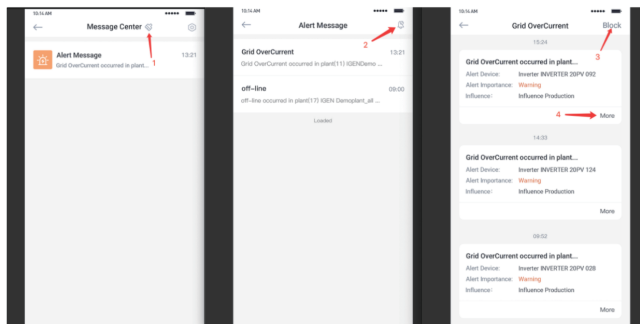
3.1 Messaging

Go to 「Me」 page and find "Messaging" icon in the upper-right corner. System will list plant message, alert message and notification here.
 Notice: Currently, users can only receive alert message here.



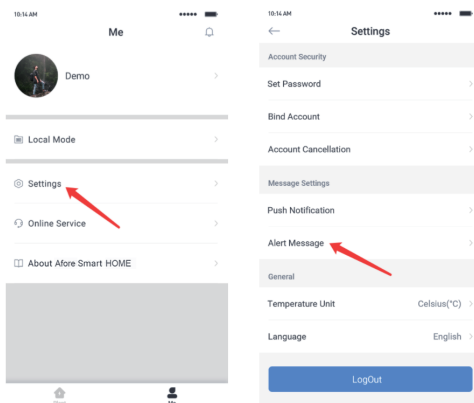
Click "**Messaging**" icon to check more details.

- (1) Icon 1: Mark all message as read.
- (2) Icon 2: Go to 「**Block List**」, users can restore block settings here.
- (3) Icon 3: Block current alert or restore current alert. After the blocking, such alerts will no longer be pushed.
- (4) Icon 4: Go to 「**Alert Details**」.



3.2 Message Settings

Go to 「**Me**」 - 「**Settings**」 - 「**Alert Message**」 page, users can set alert message here.



3.2.1 Receive Alert Message

Afore Smart HOME App pushes all alert message for free. System also supports three other receiving methods, which is a paid service.

(1) E-mail Notification | Paid Service

Users will receive a push notification from E-mail, which is convenient to receive through smart terminals such as PC / tablet / mobile phone. Currently, "service plan" is in trial operation period, each account can enjoy 500 E-mail notifications for free.

(2) SMS Notification | Paid Service

Users will receive a push notification from SMS, which is convenient to receive through smart terminals such as tablet / mobile phone. Currently, "service plan" is in trial operation period, each account can enjoy 250 SMS notifications for free.

**Note:**

This service only support the mobile number of China's mainland (+86).





(3) Voice Call Notification | Paid Service

Users will receive a push notification from voice call, which is convenient to receive through smart terminals such as PC / tablet / mobile phone. Currently, "service plan" is in trial operation period, each account can enjoy 50 voice call notifications for free.

**Note:**

This service only support the mobile number of China's mainland (+86).

Alert Message

 APP Push	<input checked="" type="checkbox"/>
Users will receive a push notification from the App.	
 E-mail Purchase	<input type="checkbox"/>
Users will receive a push notification from E-mail.	
 SMS Purchase	<input type="checkbox"/>
Users will receive a push notification from SMS. Notice: The service only support the mobile number of China's mainland (+86).	
 Voice Call 收费	<input type="checkbox"/>
Users will receive a voice call notification. Notice: The service only support the mobile number of China's mainland (+86).	

3.2.2 Alert Range Settings

Afore Smart HOME will classify all alert importance. Users can set alert range reasonably, which can reduce the disturbance caused by unimportant alert.

- Prompt Message: This kind alert occurs frequently, but it will not affect the normal operation of power plant.
- Warning Message: This kind alert will happen, which is generally manifested as abnormal data in a short period.
- Failure Message: The frequency of this kind alert is low, which needs to be paid special attention to.

Alert Range Settings

If the alert is not in the receiving range, it will be filtered.

Prompt Message

This kind of alerts occurs frequently, but it will not affect the normal operation of power plant.

☐

Warning Message

This kind of alerts will happen, which is generally manifested as abnormal data in a short period.

☒

Failure Message

This kind of alerts frequency are low, which need to be paid special attention to.

☒

3.2.3 Alert Frequency Settings

Currently, device data will be sent to Afore platform periodically following a certain frequency. Users can set alert frequency reasonably, which can reduce the disturbance caused by unimportant alert or false alert.

For example:

- (1) If you set Trigger Times: 1, Afore platform will notify you immediately when the alert data has been uploaded. One alert data means one alert notification.
- (2) If you set Trigger Times: 3, Afore platform will notify you when it has received three same alert data. Three same alert data means one alert notification.

Alert Frequency Settings

Reasonable alert frequency settings can properly reduce the disturbance caused by false alert.

Current Setting: Alerts will be received after 3 trigger times

Trigger Times: 1

Trigger Times: 2

Trigger Times: 3

Trigger Times: 4

Trigger Times: 3

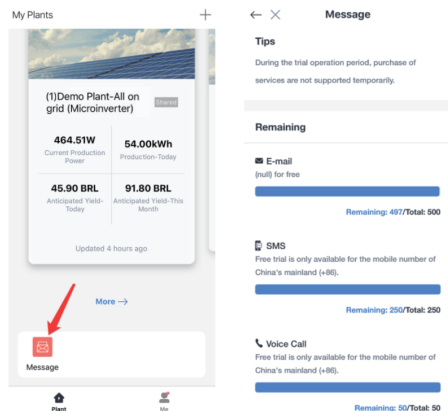
Note: The acquisition period of alert information is about 5-10 minutes.

3.3 Service Plan

Afore Smart HOME supports multiple receiving methods for alert message. Users can receive message via SMS, Voice Call and E-mail, which avoid property losses caused by device failure and other reasons.

Instructions:

- (1) Receiving alert message from SMS/Voice Call/E-mail is a paid service.
- (2) Service Plan is in trial operation period, each account can enjoy 500 E-mail notifications/250 SMS notifications/50 voice call notifications for free. [Only support mobile number of China's mainland (+86)].
- (3) Message package purchases will be open soon, which will support global mobile number.

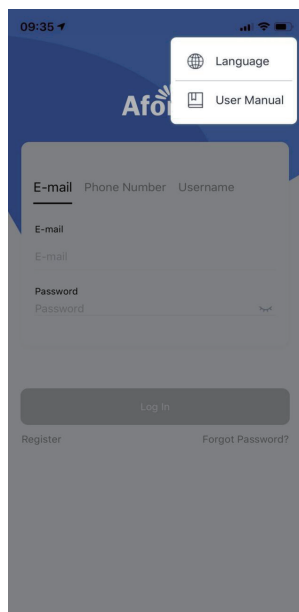


4. Others

4.1 Languages

Afore Smart HOME supports 5 languages for now, which are 简体中文, English, Español, Português, Polski.

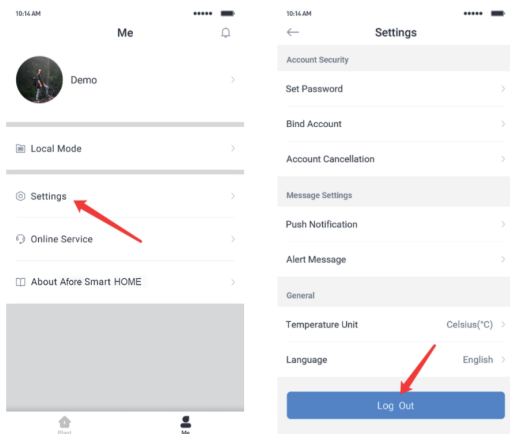
When you first log in to Afore Smart HOME App, system will match the suitable language according to your phone system. If you wish to switch the language, please go to upper-right corner at login page or 「**Me**」 - 「**Settings**」 - 「**Languages**」.



4.2 Common Operations

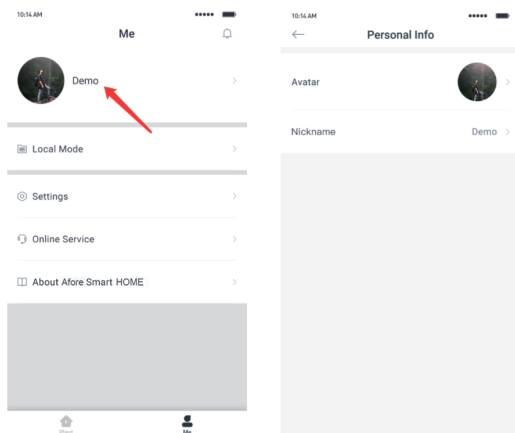
4.2.1 Log Out

Go to 「Me」 - 「Settings」 to log out.



4.2.2 Personal Info

Go to 「Me」 and click your avatar to modify your personal info.

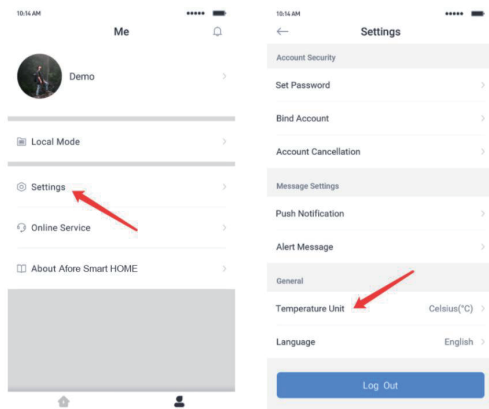


4.2.3 General

(1) Temperature Unit

Go to 「Me」 - 「Settings」 to select temperature unit.

Only support Celsius and Fahrenheit for now.

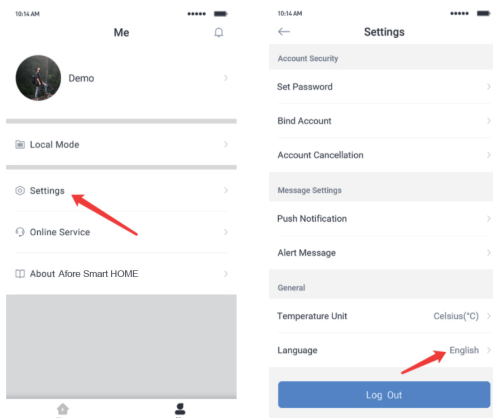


(2) Language

Go to 「Me」 - 「Settings」 to select the language.

Afore Smart HOME supports 5 languages for now, which are

简体中文, English, Español, Português, Polski.



4.2.4 Online Service

Go to 「Me」 - 「Online Service」 to contact Afore customer service directly.

Online Time: 09:00~11:30 AM, 12:30~18:00 PM (UTC+8).

Or users can leave a message here, customer service will reply to you as soon as possible.

